



Central KwaZulu-Natal Climate Change Compact

Mainstreaming Climate Change Response

Presentation to Study Tour

October 2014



dac | durban
adaptation
charter



dac

HOW NOT TO RESPOND TO CLIMATE CHANGE





HOW DO WE RESPOND TO CLIMATE CHANGE?

Two approaches: Both required, NOT mutually exclusive

Mitigation



Reducing the causes of climate change

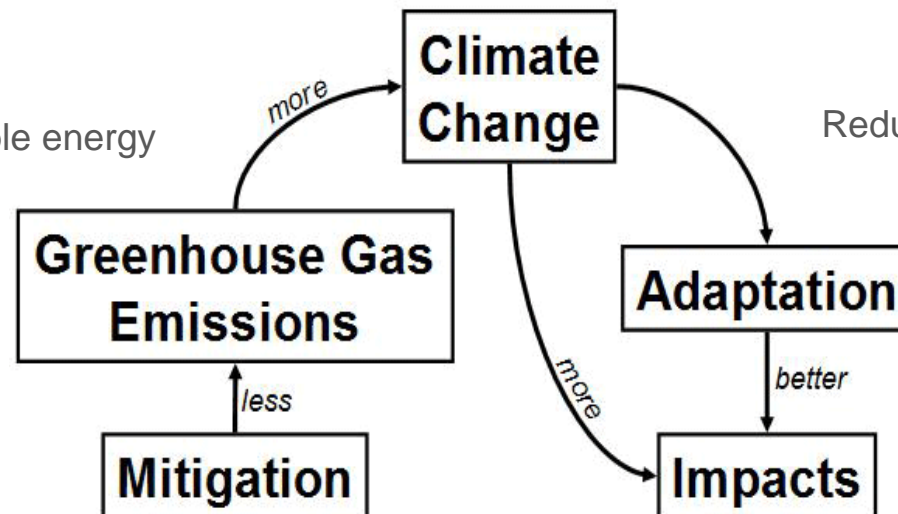
Energy efficiency, Renewable energy

Adaptation



Adapting to the impacts of climate change

Reducing climate vulnerability



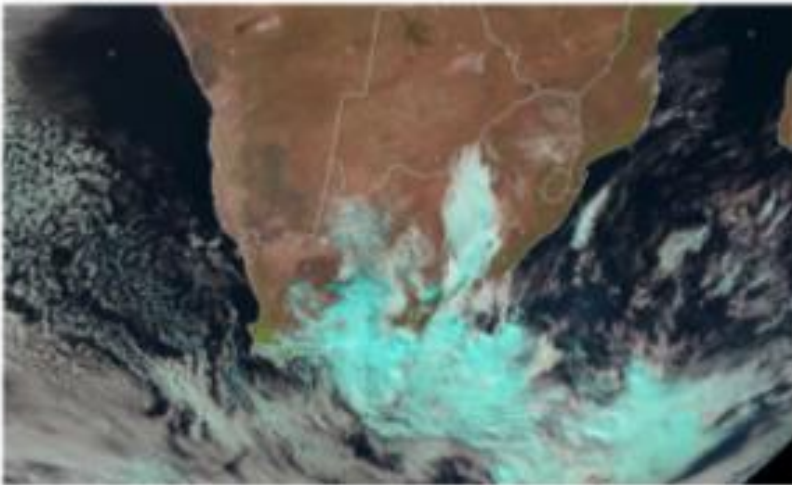


WHAT ARE WE ADAPTING TO?

- Current climate vulnerability

Snow and rain cause chaos across the country

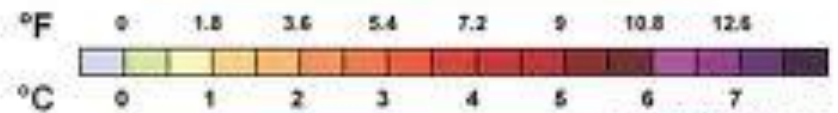
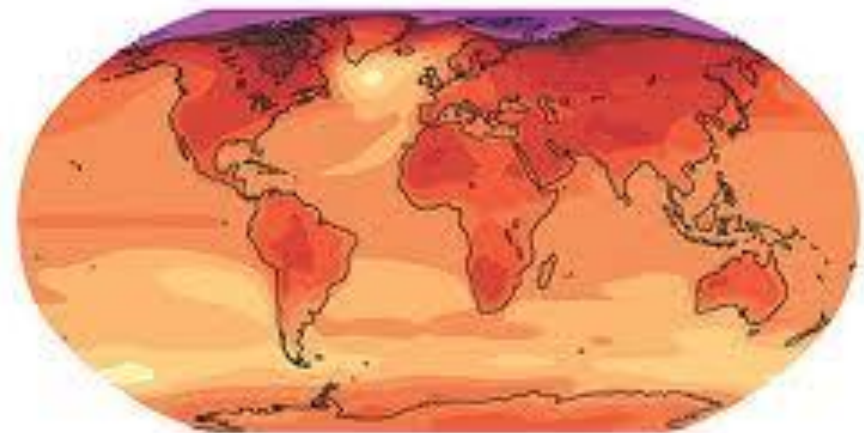
Sep 1 14 July, 2012 15:33



Eumetsat, southern Africa
Image by: Copyright eumetsat.org

- Projected climate changes

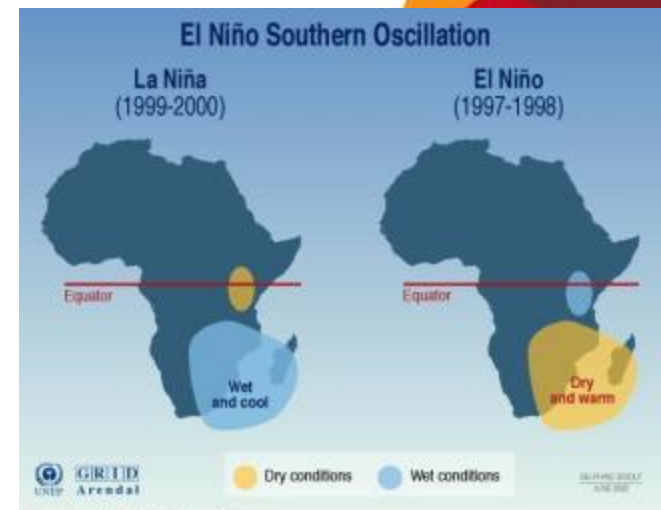
Projected Temperature Increases Middle Emissions Scenario, 2080 - 2099



CURRENT CLIMATE VULNERABILITY



- Drivers
 - Climate variability
 - Socio-economic challenges
 - Legacy of bad planning decisions



Sources: Climate Prediction Center-NCEP



PROJECTED CLIMATE CHANGES



- Hotter
- Increased frequency and magnitude of extreme storm events, with associated:
 - Rainfall deluges
 - Stronger winds
 - Storm surges
- Extended dry periods between rainfall events
- Shifts in seasonality
- Sea Level Rise





NOT ALL DOOM & GLOOM



- Not all negative - change also presents opportunities
 - Must be informed and prepared to take advantage of these
- Need to be proactive and start adapting to changing conditions & develop resilient communities, ecosystems, economy
 - A reactive cycle of recovering from disasters is very costly and poses a serious threat to growth and development.





Mainstreaming Climate Change Response



- Climate adaptation is ***not only an environmental issue***
 - Affects people, infrastructure, & economy as well
- ***Continuous ongoing process*** of developing local coping capacity, building resilience and reducing vulnerability
 - Do in-house; not sustainable to rely on consultants
- ***Change the way*** municipality does things rather than what munic does
- No capacity to add new work areas; ***Develop the capacity within the line functions*** to respond in a flexible way to uncertain future

NOT SURE IF THIS SLIDE IS REQUIRED ANYWHERE



- Natural systems that improve resilience to climate impacts or that themselves reduce climate impacts
- Reduced climate vulnerability & increased climate resilience within communities across the province
- Adaptive economy ready to take advantage of opportunities arising out climate change, as well as mitigate losses



INSERT PIC OF
RE here

Examples / other ideas





www.durbanadaptationcharter.org

