



From Mitigation to Adaptation



Dr Sean O'Donoghue

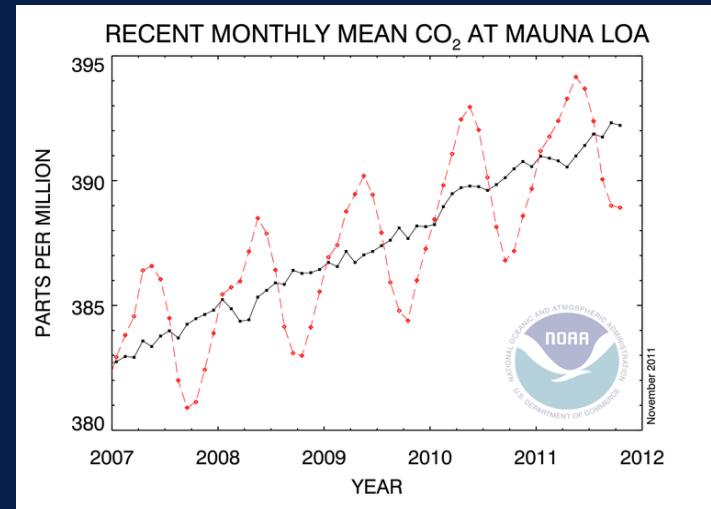
eThekweni Municipality | Planning Unit
ENVIRONMENTAL PLANNING & CLIMATE PROTECTION DEPARTMENT



The mitigation story thus far:



2011 CO₂ atmospheric concentration = **388 ppm** in October 2011
350 ppm is considered the safe upper limit



Is COP17/CMP7 the end of the Kyoto Protocol?

Is there reasonable hope for a legally binding agreement?

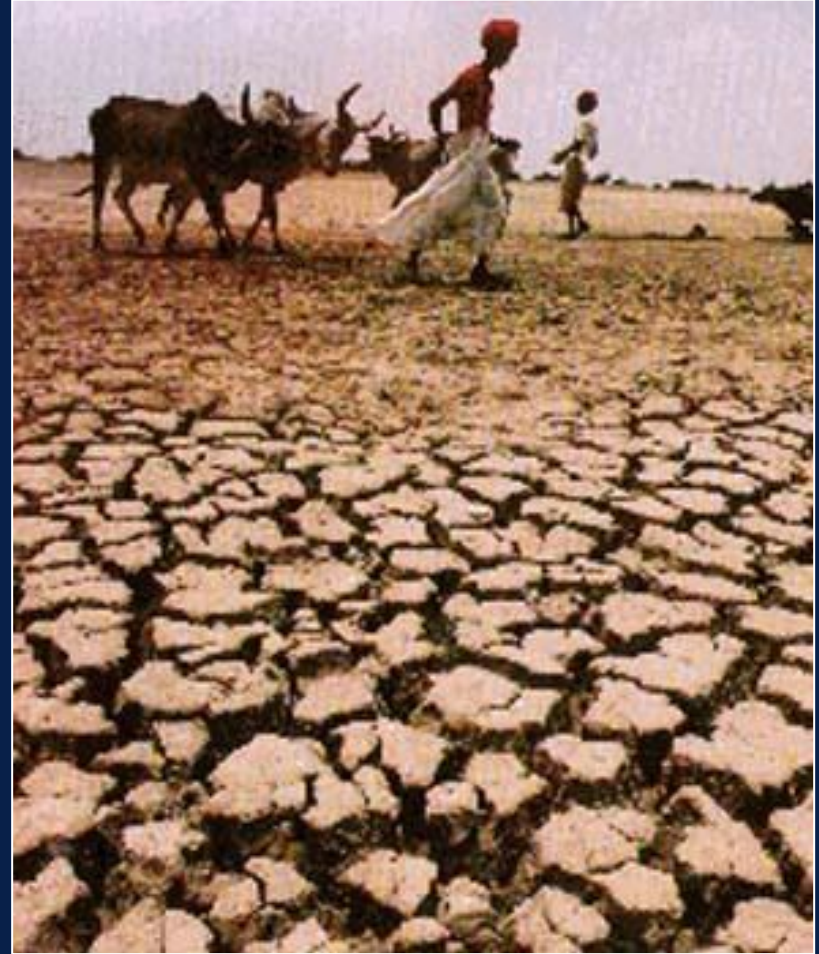
Mitigate for our future:



We now face no longer avoidable climate change:



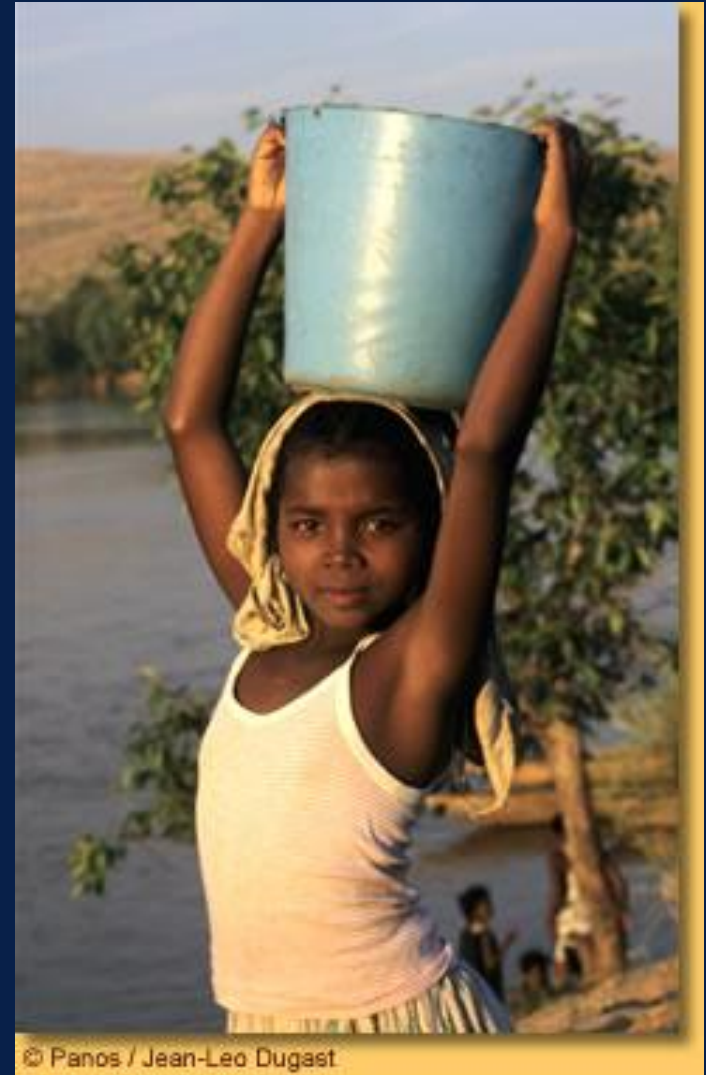
The Climate Outlook:



Those most at risk:



Direct dependence upon Ecosystem Services:



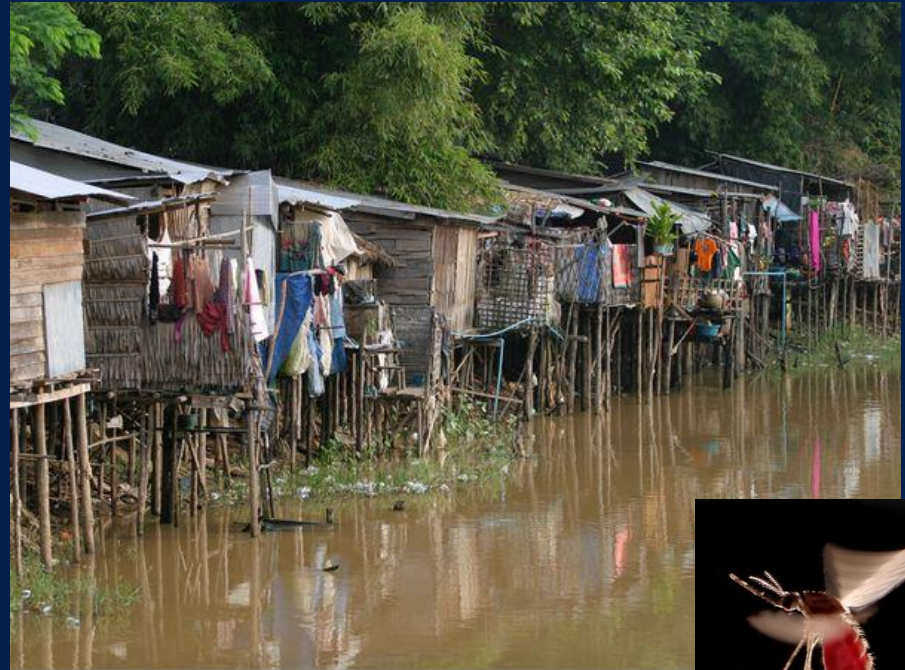


The risk of maladaptation:





Compounding impacts and co-benefits:





The adaptation response will require:

- **A coordinated strategy**
- **Comprehensive research**
- **Effective communication, awareness-raising and empowerment**
- **Funding**
- **Strong political leadership and a will to adapt.**



THANK YOU

