



Cato Manor Area Based Management and Development Programme

**“Working Together Today to Build a Better
Tomorrow”**



Emergence of Development Project

- ✿ Identified in the early 1990's
- ✿ Dawn of a new era in South Africa
- ✿ Cato Manor identified as:
 - ▶ Prime metropolitan restructuring opportunity
 - ▶ Pilot model of post-apartheid sustainable urban development practice



Land Invasions

- ✿ **Mass invasions (1993 – 1995)**
- ✿ **Emergence of informal settlements (35 000 people)**
- ✿ **+/- 50% displaced by violence**
 - ▶ **Assets lost**
 - ▶ **Trauma**
 - ▶ **Disintegration of social networks**
- ✿ **66% younger than 26**
- ✿ **12 % with high school education or more**
- ✿ **38% unemployed**
- ✿ **60% formal employment (60% labourer / domestic)**
- ✿ **80% household income <R1500pm**



Key Dimensions

- ✿ **Engineering infrastructure**
- ✿ **Housing and secure land tenure**
- ✿ **Social facilities and services**
- ✿ **Economic development**
- ✿ **Community development**
- ✿ **Preservation of biodiversity**



Scale Factors

- ✱ 1 800ha
- ✱ 900ha developable land
- ✱ 25 000 dwelling units
- ✱ +/- 150 000 people
- ✱ 25 000 jobs
- ➡ Migration has a major impact on the above figures



Cato Manor Area Based Agency

Core Purpose

- ▶ To facilitate interventions that increase the availability of socio-economic opportunities and services by identifying and matching socio-economic development needs with services and interventions.
- ▶ Public information and communication services management
- ▶ Programming, budgeting and project preparation
- ▶ Coordination of service delivery by public sector agencies
- ▶ Partnership building, facilitation and support
- ▶ Local land management support
- ▶ Local development management and support



Cato Manor Area Based Management

Institutional Location:

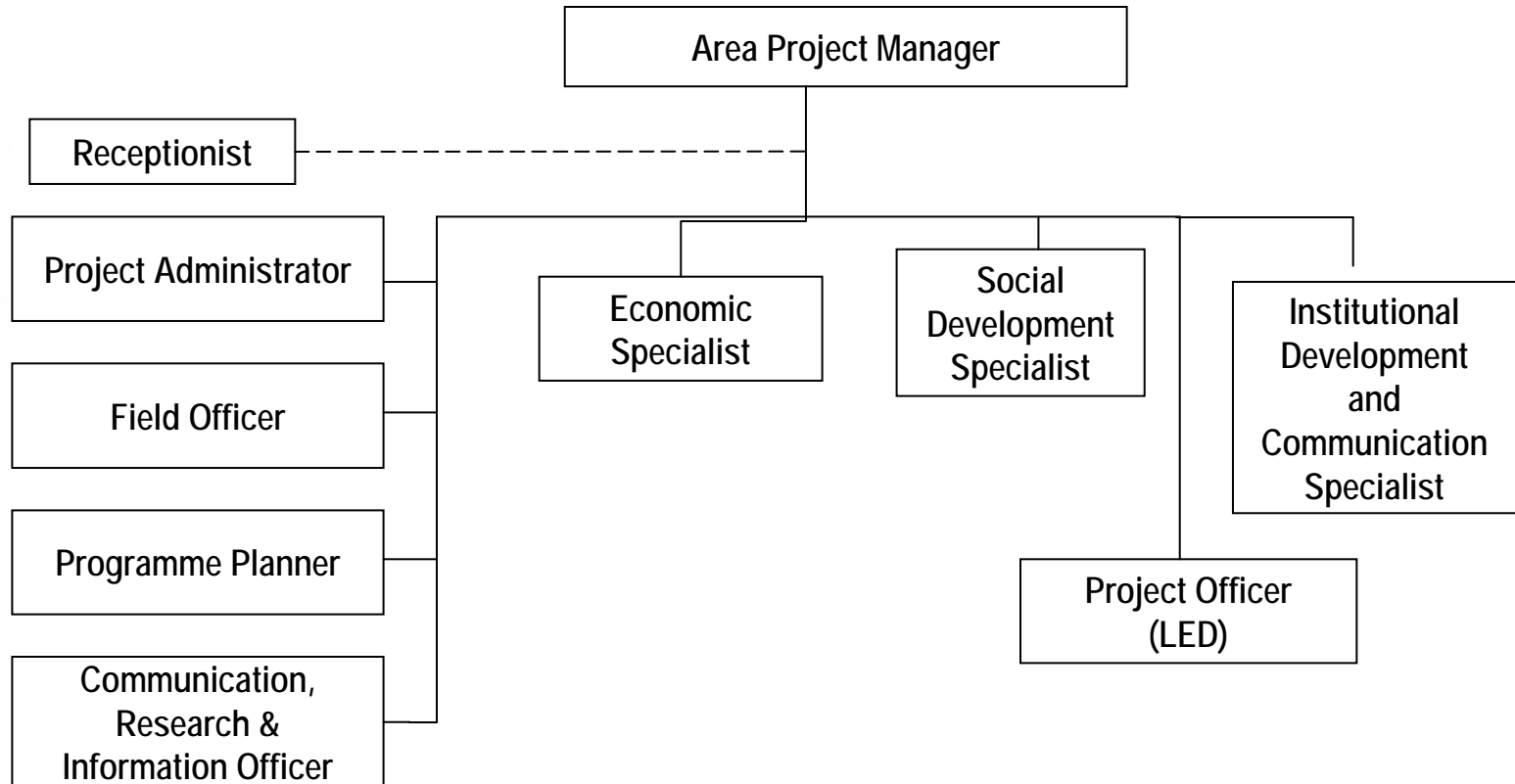
- ▶ **Within eThekweni Municipality: Sustainable Development and City Enterprises Cluster**
- ▶ **Spatially located in Cato Manor**

Staffing

- ▶ **Provision for a team of ten staff.**



Institutional Structure



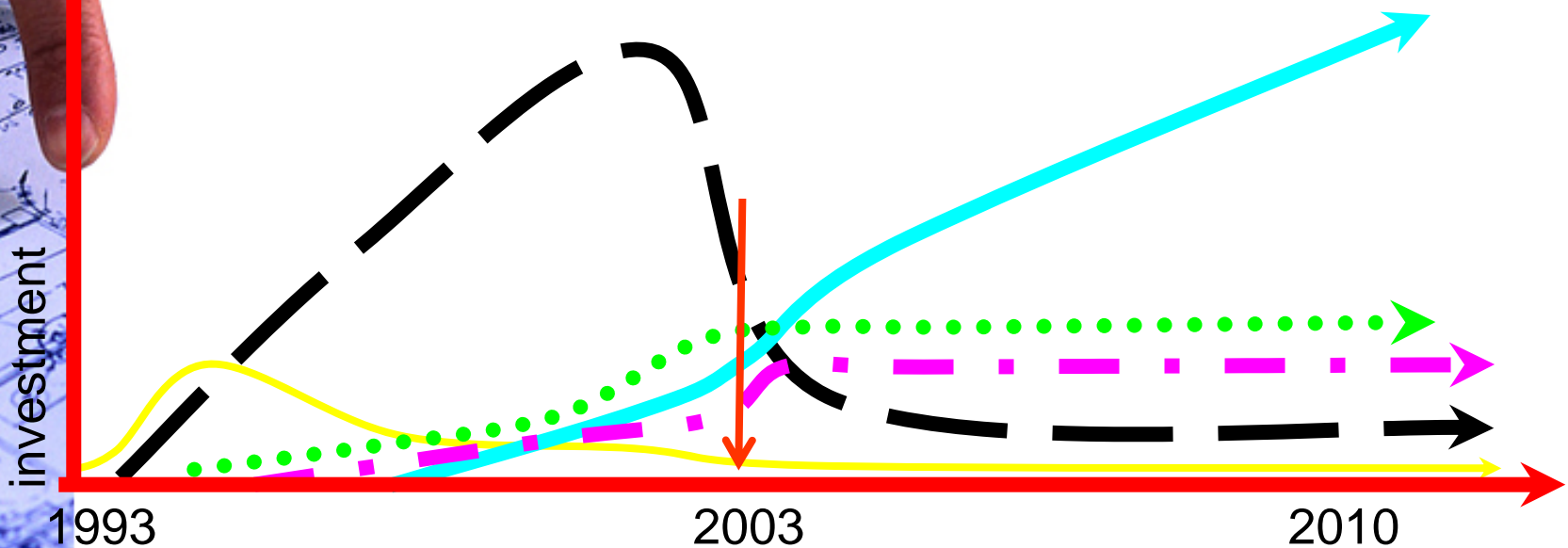
Vision

- ✿ **Compact city within city**
- ✿ **Targeting the poor and marginalised**
- ✿ **Integrating the poor into the city**
 - ▶ **Spatially**
 - ▶ **Politically**
 - ▶ **Economically**
 - ▶ **Socially**



Key Shifts....2003 Onwards

- Securing the Pre-conditions for Scale- Delivery
- - - Housing, Social/Engineering Infrastructure, Land Preparation
- Local Economic Development
- - - Social and Human Resource Development
- Private Sector – Industrial/Commercial Investment



Overall Objectives

Economic Component

Social Component

Physical Development Component

Improve Cato Manor residents position in the Metropolitan Labour Market

Attract new and expanding businesses to locate in Cato Manor

Improve the rate of enterprise starts survival growth in Cato Manor

Social Empowerment

Community Safety

Access to Services and Facilities

Complete Infill and Maximise Yields



Economic Component

Labour Market

Improve Cato Manor Residents Position in the Metropolitan Labour Market

Job Shops

Vocational Skills Development

Attract Investment

Attract New and Expanding Businesses to Locate in Cato Manor

Targeted Marketing

Incentives

Facilities/ Land Development

Local Business Growth

Improve the Rate of Enterprise Starts, Survival and Growth in Cato Manor

Skills

Finances

Support

Facilities



Social Component

Community Empowerment

Empower individuals and organizations to build social capital

Develop Community Organization

Life Skills Training

Communications

Sports & Recreation

HIV Reduction

Community Safety

Promote Well-being

Community Safety / Well-being

Promote safe environment with reduced risks and less hardships

HIV Impact Mitigation

Care for Aids Sick

Orphan Care

HIV/Aids Care

Care for those infected and affected by Aids



Physical Development Component

Access to Services and Facilities

Cato Manor residents and CBOs have access to basic services and facilities

Access to Basic Utilities

Bulk Infrastructure Maintenance & Operations

Complete Upgrade Projects

Social Facilities

Complete Infill and Maximise Yields

Capacity of Cato Manor to contribute to compacting the city is realized

Attract Middle-Income Housing

Encourage Densification



Result Areas

- ✿ **Different approaches to ABM operationalised and tested**
- ✿ **Capacity of ABM managers, council officials, councilors, communities and other stakeholders to play their respective roles in ABM is enhanced.**
- ✿ **Democratic processes deepened.**
- ✿ **Service delivery improved**
- ✿ **Economic development enhanced.**



Five Year Strategic Focus

Outcome 1 : Residents are able to function effectively in the local and regional economy

Strategy 1

Increase residents' ability to compete in the Metropolitan Labour Market

Strategy 2

Promote & support participation of residents in production, retailing and service enterprises

Strategy 3

Exploitation of industrial and commercial investment opportunities



Outcome 2

Residents have enhanced human capacity and experience a stabilized environment.

Strategy 4

Address crime, mitigate and avoid local disasters and unavoidable hardship

Strategy 5

Empower communities and promote personal dignity amongst residents



Outcome 3

Resources and services in Cato Manor are efficiently utilized

Strategy 6

Improve access to services and facilities

Strategy 7

Complete in-fills and maximize yield and strive for efficiency



Outcome 4

Capacity of Cato Manor Team to contribute to all outcomes is increased

Strategy 8

Improve capacity of Cato Manor
ABM Team



Indicators (under review)

- ✿ **Effective NGOs and CBOs increase on a year to year basis**
- ✿ **Crime and violence decreases**
- ✿ **Social networks increase**
- ✿ **Levels of utilisation of services and facilities increases and complaints decreases**
- ✿ **Employment ratio in formal wage sector increases**



Indicators (under review)

- ✱ **Business opportunities are fully utilised**
- ✱ **Investors are able to access serviced land and a package of incentives**
- ✱ **Number of residents affected by local disasters declines**
- ✱ **Participation levels of residents in community structures increase and stabilise**
- ✱ **Housing patterns and social profiles of residents move toward a normal distribution.**



Contextualisation of Projects vs the IDP

- 
- ✿ **Building people skills & technology**
 - ▶ Skills Development Programme
 - ▶ Community Support Programme
 - ▶ Life Skills Programme
 - ✿ **Improving Quality of Life**
 - ▶ Traffic Intervention & Community Safety
 - ▶ HIV/AIDS Programme
 - ▶ Culture & Recreation
 - ✿ **Strengthening Our Economy**
 - ▶ Industrial & Commercial Land
 - ▶ Business Support Programme
 - ▶ Economic Empowerment & Support for Co-ops
 - ▶ Improve Management of Facilities
 - ▶ Savings & Credit Programme



Key Outputs

- **Number of entrepreneurs supported**
- **Number & value of strategic partnerships forged to deliver growth**
- **Changes in the level of knowledge in attitudes and behavioural responses to HIV/AIDS epidemic**
- **Increased utilisation and maintenance of existing social facilities**
- **Level of economic growth**

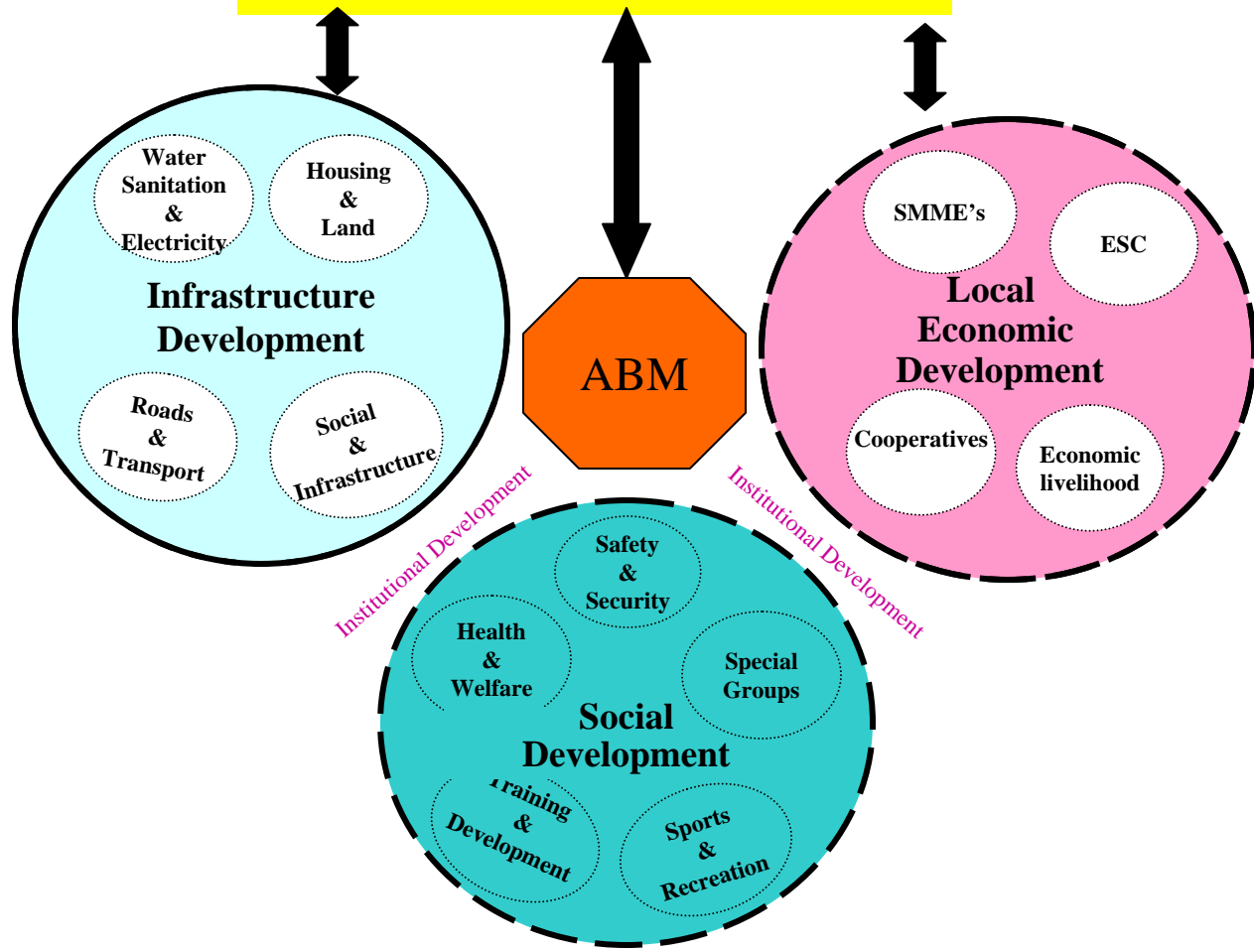


Key Challenges

- **High rate of unemployment (crime, poverty, drug & alcohol abuse)**
- **Community instability and fluctuations in representivity and interest**
- **Relationships with line function departments**
- **The impact of internal and external power relations**
- **Uncoordinated service delivery (Service Providers working in the area)**



Cato Manor Stakeholders Forum



ABM Projects





Thank You

