



DR NKOSAZANA DLAMINI ZUMA LOCAL MUNICIPALITY PRESENTATION ON COMMUNITY SERVICES DEPT

PRESENTED AT THE SALGA-EU PROJECT 2019

Venue : SALGA OFFICE ,W/CAPE

Date: 12th August 2019

Presentation Outline

- ▶ The presentation will cover the following aspects:
- ❖ A brief Introduction and Profile of the Municipality
- ❖ The Overview of the Community Services Dept at Dr Nkosazana Dlamini Zuma LM
- ❖ Mandate - Roles and responsibilities
- ❖ Organogram- identified Gaps etc
- ❖ Benefits and or Limitations of placement of LED & Tourism Unit under this dept
- ❖ Limitations and planned Possible Solutions

Brief Introduction & Profile

- ❑ Established in 2016 - Amalgamation of former KwaSani & Ingwe Municipalities
- ❑ Located in the Southern part of KZN
- ❑ 15 Wards with 29 Cllrs (15 Ward Cllrs and 14 PR)
- ❑ 11 traditional Leaders
- ❑ an estimated Population of 118 480 (2016 Census)
 - Males 56656 728 (47,88%)
 - Females 61 752 (52,1%)
- ❑ Area size 3602 km²
- ❑ Main economic sector : Agriculture, Tourism, forestry
- ❑ High Schools: 29
- ❑ Towns - 5 (Creighton, Bulwer, Donnybrook, Himevile & Underberg)
- ❑ Libraries ; 4 (one planned for 2020/2021- Arts & Culture attending to it)
- ❑ Health facilities 13
- ❑ TVET/Tertiary Institution - 0

Legislative Mandates & Policies Guiding this dept in its Functions

- ▶ Municipal Structures Act 2000 as ammended
- ▶ Municipal Systems Act
- ▶ Municipal Finance Management Act-
- ▶ Disaster Management Act-

Roles & Functions of Community Services

- ❑ Coordination of services through the ff:
- ✓ Operation Sukuma Sakhe structures, (WTT,LTT, LAC, DTT and DAC and Operation Mbos)
- ✓ IGR Forums- promotion of responsiveness to community needs, monitoring interventions by various stakeholders and accountability in terms of reporting
- ✓ Disaster management Forum
- ❑ Promotion of Economic Development through LED and tourism
- ❑ The gaps within Traffic department are being addressed (Recruitment through Narysec has commenced)
- ✓ Disaster & Fire management - a service provider (Rural Metro) has eased the burden as 50% of our area is covered by them.
- ✓ Our area is in the Lesotho border - hence two pounds ie Creighton & Himeville pounds are utilized- shortage of HR in this sub unit is noticeable

Waste Management Services and cemeteries are based under Public Works and Basic services

Community Services Departmental Units

COMMUNITY PROGRAMS

- OSS
- HIV/ Aids
- Women, Children, Snr Citizens
- Disability ,Youth
- Sport Development
- Arts & Culture and
CWP

LED & TOURISM

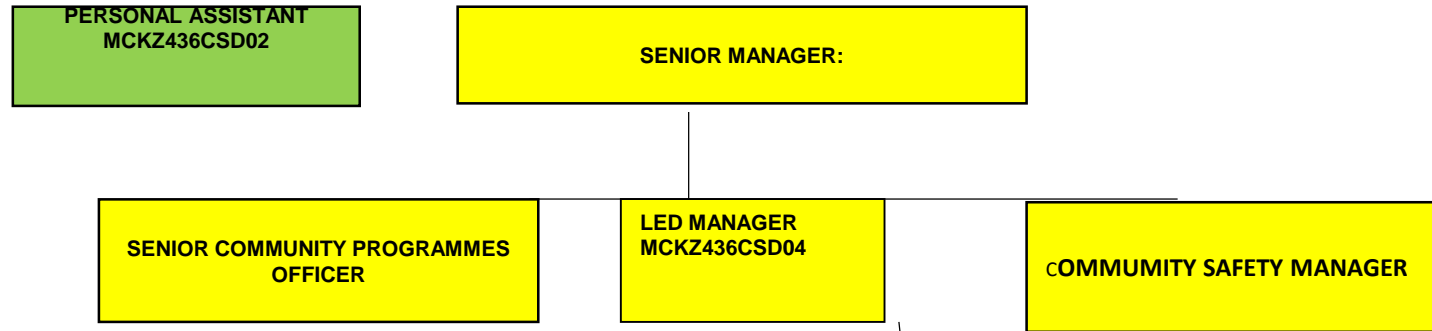
- SMME & Coops Promotion
- Tourism Destination Marketing

COMMUNITY SAFETY

- Disaster management
- Libraries
- Pounds
- Protection services

Organogram

COMMUNITY AND SOCIAL SERVICES



Comments / Lessons learnt on Human Resources vs Responsibilities in each unit

Limitation/ Benefit	Possible Corrective measures
Vastness of the area- only eight (8) Traffic officers operating in the area	A formal request has been sent to RTI for extension of their area of jurisdiction
There has been an outcry on poor visibility of traffic officers in some hot spot areas	Recruitment & selection of Traffic officer trainees are underway (Shortlisting & Recruitment has been done)
Pending Disciplinary measures against some Law Enforcement members pose a gap in service delivery	Members have been workshopped and cautioned on anti Fraud and corruption strategies
Gaps in Community Programs - there is a need for an OSS officer to strengthen IGR to respond to community needs and improvement of Communications	This has been discussed at the recent Strat Plan-
LED Manager recently retired	Recruitment & Selection processes have commenced- applications closed on 19 th July

Benefits/Limitations of Incl LED & Tourism under Community Services Department

□ Benefits

- ✓ LED focuses on economic Empowerment and boosting of Local economy
- ✓ It promotes synergy in Addressing the rate of unemployment and poverty patterns reported at OSS structures- LED responds directly to Socio economic needs
- ✓ Addresses crime trends associated with unemployment
- ✓ Focuses more on skills development -
- ✓ Measure impact on improvement of socio economic factors in our communities
- ✓ Stats on how many women, youth, people living with disabilities have benefitted
- ✓ Having LED in this Department positions those (Artists and Crafters) identified through social programs to be integrated easily to LED programs.

Comments on Limitations Identified in the Previous Presentation

Limitation	Update
Lack of understanding by Political Leadership	Council has been work-shopped on Legislative mandates and policies. There has been a noticeable improvement in-terms of understanding of local Government

THE END

Thank You

Kea leboa

Muchas Gracias

SIYABONGA