



UNIVERSITY OF
KWAZULU-NATAL™

INYUVESI
YAKWAZULU-NATALI

“ A conceptual framework: Addressing hand hygiene, reducing diarrhoeal diseases in eThekweni school children”

S Naidoo¹, SE Knight¹, M Taylor¹, JS Ngozo², R Jordan², A Kunene³

¹Discipline of Public Health Medicine, School of Nursing and Public Health, UKZN

² TB Control Programme, KZN Department of Health

³ KZN, Department of Basic Education



EDGEWOOD CAMPUS



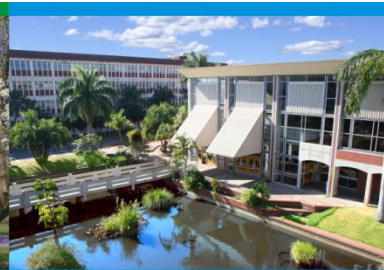
HOWARD COLLEGE CAMPUS



NELSON R MANDELA SCHOOL OF MEDICINE



PIETERMARITZBURG CAMPUS



WESTVILLE CAMPUS

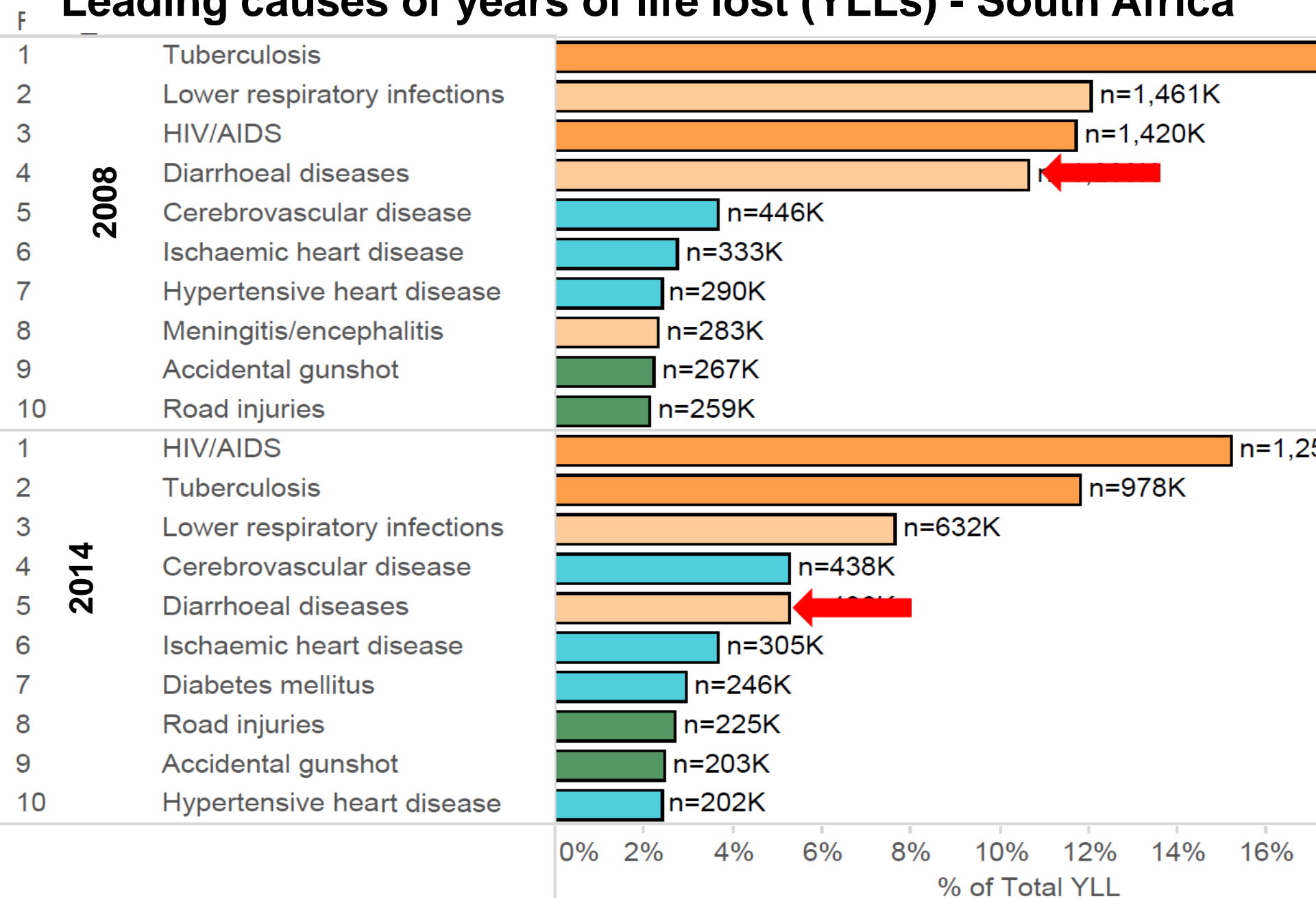
UKZN INSPIRING GREATNESS

Diarrhoeal diseases

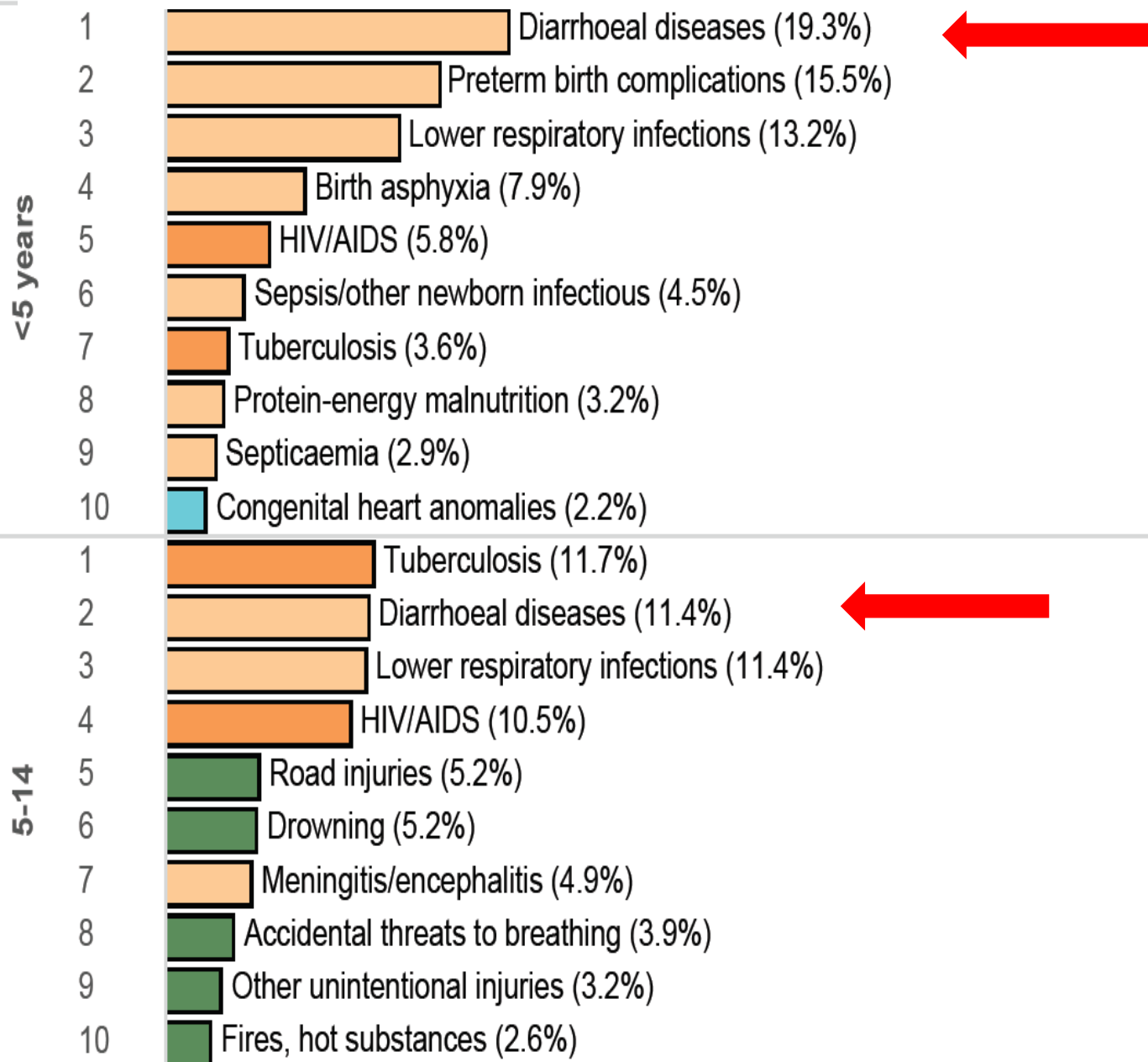
- Responsible for high morbidity and mortality in young children in South Africa and KwaZulu-Natal. ¹
 - 2008 – 4th ranked cause of Years of Life Lost
 - 2014 – 5th ranked
- In eThekweni Municipality 2009 to 2014¹
 - under 5 year olds – leading cause of death
 - 5 to 14 year olds – second ranked

¹ District Health Barometer 2015/2016. Health Systems Trust

Leading causes of years of life lost (YLLs) - South Africa



ETHEKWINI: LEADING CAUSES OF DEATH (2009-2014)

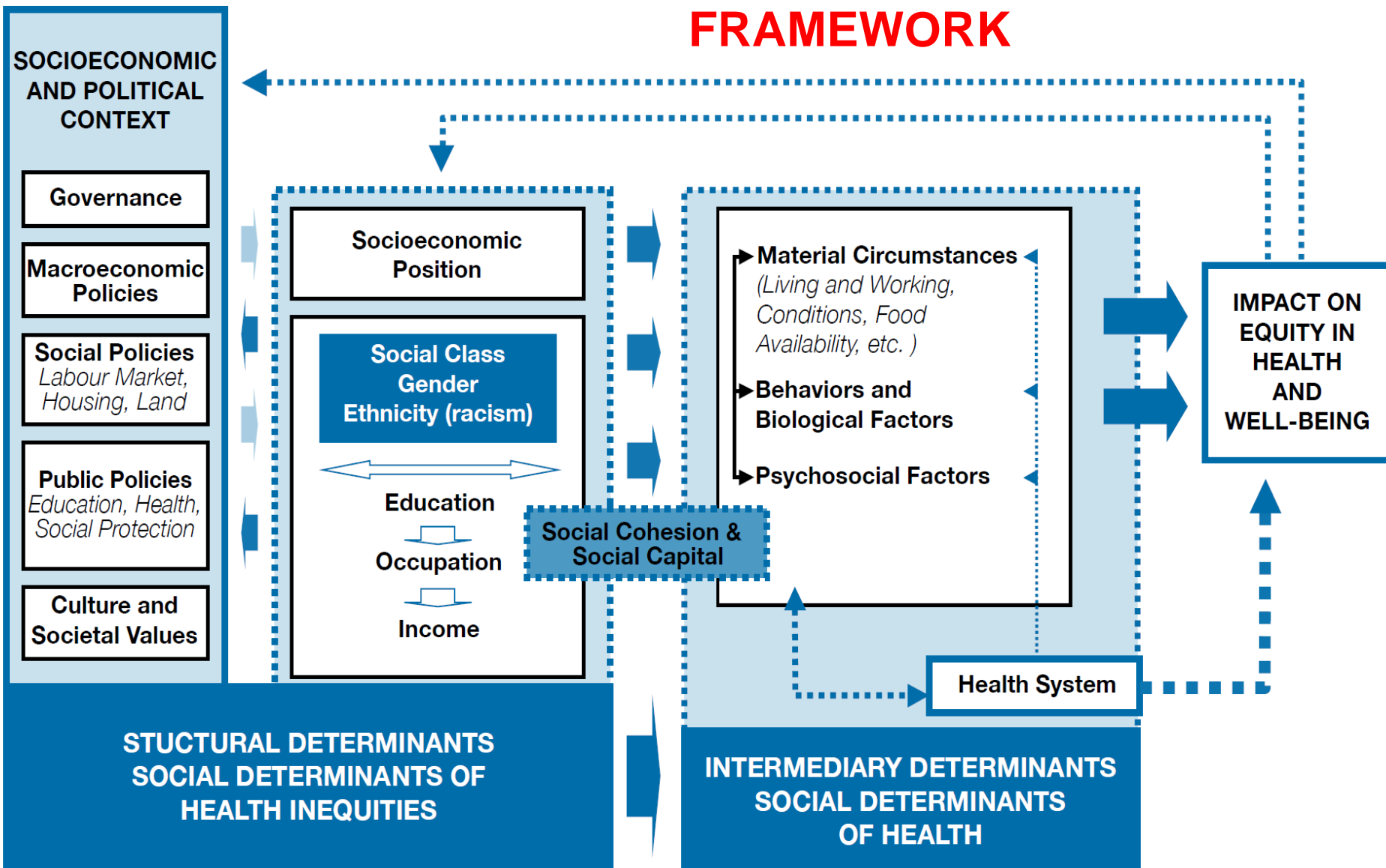


RESULTS

DEMOGRAPHICS AND SANITATION ACCESS AMONG GRADE 4 PUPILS IN ETHEKWINI (N=724)

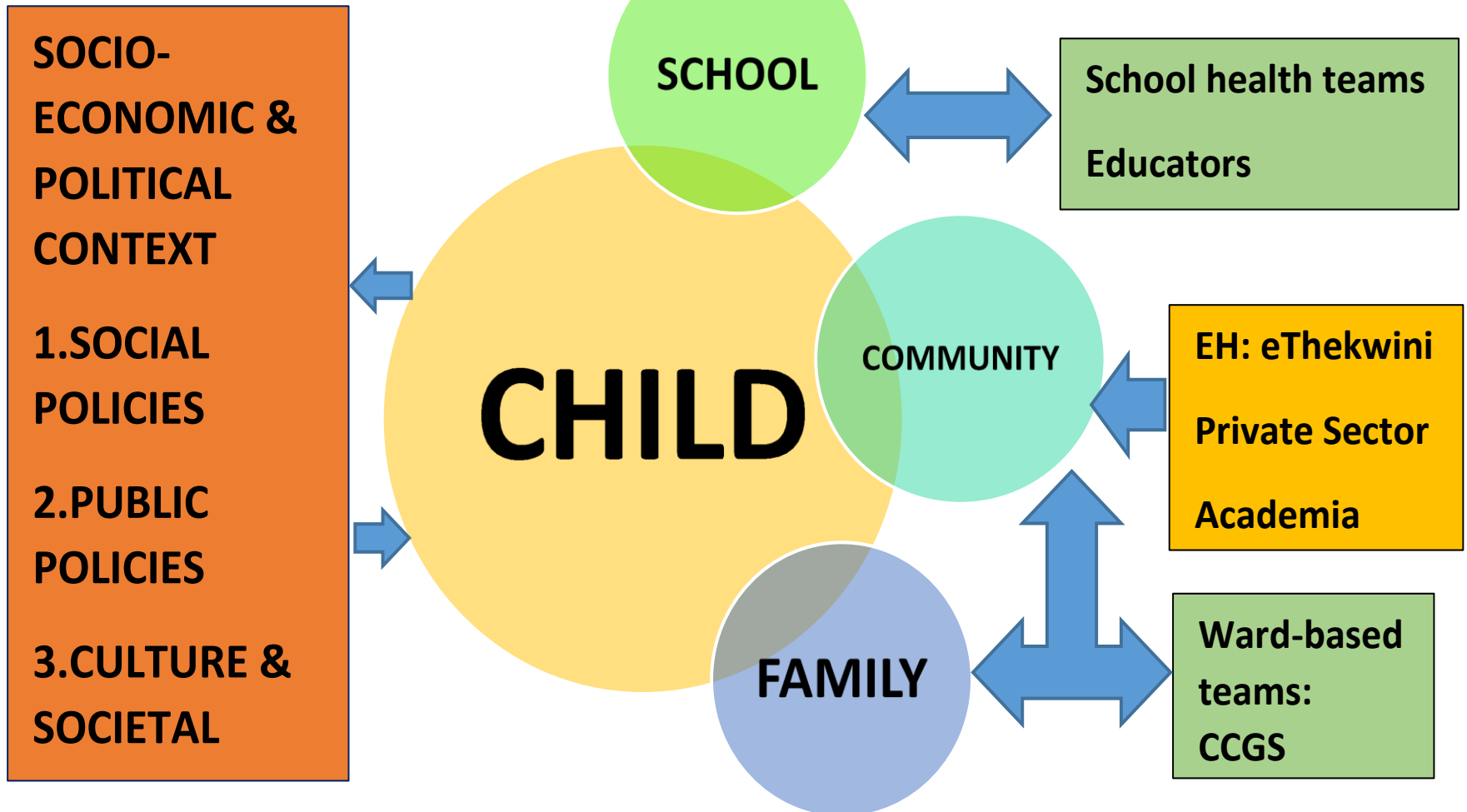
Age - (mean)	9.9 years
Sex: Female	384 (53%)
Water source: Tap	694 (95%)
Toilet: Flush	565 (78%)
Wash hands after using toilet	669 (96%)
Use water and soap	677 (93%)

FRAMEWORK



²A CONCEPTUAL FRAMEWORK FOR ACTION ON THE SOCIAL DETERMINANTS OF HEALTH DEBATES, POLICY: WHO

MODEL



CONCLUSIONS

- Validity of results
- Diarrhoeal disease unmeasured
- Socio-economic status of eThekweni residents?
- Model proposed highlights the multitude of associated elements to be addressed
 - Inter-sectoral action
 - Participation of Civil Society and Communities
- Emphasis on children's health and development